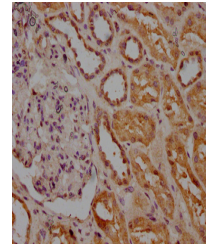


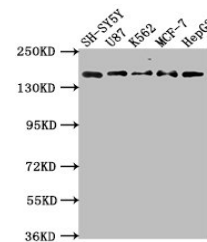
Product Datasheet

INSRR antibody (orb687752)

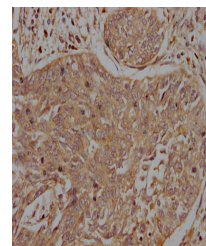
Description	INSRR antibody
Species/Host	Rabbit
Reactivity	Human
Conjugation	Unconjugated
Tested Applications	ELISA, IHC, WB
Immunogen	Recombinant Human Insulin receptor-related protein (747-921AA)
Target	INSRR
Preservatives	Preservative: 0.03% Proclin 300. Constituents: 50% Glycerol
Form/Appearance	Liquid
Storage	Maintain refrigerated at 2-8°C for up to 2 weeks. For long term storage store at -20°C in small aliquots to prevent freeze-thaw cycles.
Note	For research use only
Isotype	IgG
Clonality	Polyclonal
Uniprot ID	P14616
Dilution Range	WB: 1: 1000-1: 5000, IHC-P: 1: 200-1: 500
Expiration Date	12 months from date of receipt.



Immunohistochemical staining of human kidney tissue.



Western blot analysis of SH-SY5Y whole cell lysates.



Immunohistochemical staining of human cells.