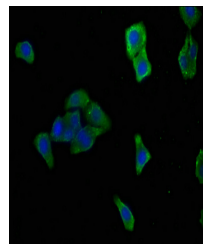


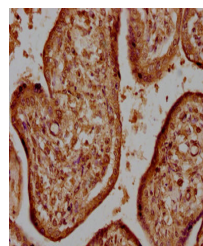
Product Datasheet

HTRA1 antibody (orb687604)

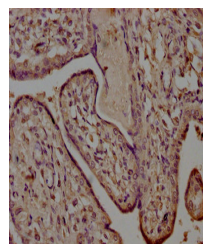
Description	HTRA1 antibody
Species/Host	Rabbit
Reactivity	Human
Conjugation	Unconjugated
Tested Applications	ELISA, IF, IHC
Immunogen	Recombinant Human Serine protease HTRA1 protein (23-248AA)
Target	HTRA1
Preservatives	Preservative: 0.03% Proclin 300. Constituents: 50% Glycerol
Form/Appearance	Liquid
Storage	Maintain refrigerated at 2-8°C for up to 2 weeks. For long term storage store at -20°C in small aliquots to prevent freeze-thaw cycles.
Note	For research use only
Isotype	IgG
Clonality	Polyclonal
Uniprot ID	Q92743
Dilution Range	IHC-P: 1: 500-1: 1000, IF: 1: 50-1: 200
Expiration Date	12 months from date of receipt.



Immunofluorescence analysis of HepG2 cel...



Immunohistochemical staining of human ki...



Immunohistochemical staining of human pl...