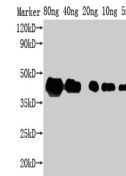


Product Datasheet

ZIP1 antibody (orb687356)

Description	ZIP1 antibody
Species/Host	Rabbit
Reactivity	Yeast
Conjugation	Unconjugated
Tested Applications	ELISA, WB
Immunogen	Recombinant Saccharomyces cerevisiae Synaptonemal complex protein ZIP1 protein (1-227AA)
Target	ZIP1
Preservatives	Preservative: 0.03% Proclin 300. Constituents: 50% Glycerol
Form/Appearance	Liquid
Storage	Maintain refrigerated at 2-8°C for up to 2 weeks. For long term storage store at -20°C in small aliquots to prevent freeze-thaw cycles.
Note	For research use only
Isotype	IgG
Clonality	Polyclonal
Uniprot ID	P31111
Dilution Range	WB: 1: 1000-1: 5000
Expiration Date	12 months from date of receipt.



Western blot analysis of Recombinant pro...