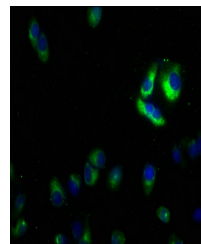


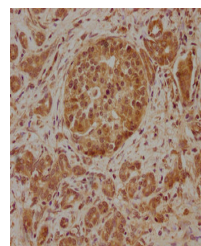
Product Datasheet

SLC39A10 antibody (orb687288)

| | |
|----------------------------|---|
| Description | SLC39A10 antibody |
| Species/Host | Rabbit |
| Reactivity | Human |
| Conjugation | Unconjugated |
| Tested Applications | ELISA, IF, IHC |
| Immunogen | Recombinant Human Zinc transporter ZIP10 protein (41-317AA) |
| Target | SLC39A10 |
| Preservatives | Preservative: 0.03% Proclin 300. Constituents: 50% Glycerol |
| Form/Appearance | Liquid |
| Storage | Maintain refrigerated at 2-8°C for up to 2 weeks. For long term storage store at -20°C in small aliquots to prevent freeze-thaw cycles. |
| Note | For research use only |
| Isotype | IgG |
| Clonality | Polyclonal |
| Uniprot ID | Q9ULF5 |
| Dilution Range | IHC-P: 1: 20-1: 200, IF: 1: 50-1: 200 |
| Expiration Date | 12 months from date of receipt. |



Immunofluorescence analysis of HeLa cell...



Immunohistochemical staining of human pa...