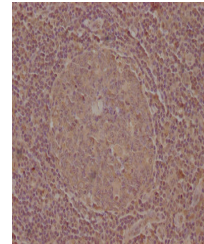


Product Datasheet

CELSR1 antibody (orb687264)

Description	CELSR1 antibody
Species/Host	Rabbit
Reactivity	Human
Conjugation	Unconjugated
Tested Applications	ELISA, IHC
Immunogen	Peptide sequence from Human Cadherin EGF LAG seven-pass G-type receptor 1 protein (345-363AA)
Target	CELSR1
Preservatives	Preservative: 0.03% Proclin 300. Constituents: 50% Glycerol
Form/Appearance	Liquid
Storage	Maintain refrigerated at 2-8°C for up to 2 weeks. For long term storage store at -20°C in small aliquots to prevent freeze-thaw cycles.
Note	For research use only
Isotype	IgG
Clonality	Polyclonal
Uniprot ID	Q9NYQ6
Dilution Range	IHC-P: 1: 20-1: 200
Expiration Date	12 months from date of receipt.



Immunohistochemical staining of human to...