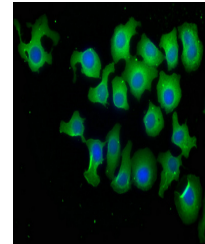


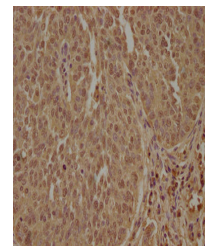
## Product Datasheet

### PPP1R13L antibody (orb687244)

<b>Description</b>	PPP1R13L antibody
<b>Species/Host</b>	Rabbit
<b>Reactivity</b>	Human
<b>Conjugation</b>	Unconjugated
<b>Tested Applications</b>	ELISA, IF, IHC
<b>Immunogen</b>	Peptide sequence from Human RelA-associated inhibitor protein (83-102AA)
<b>Target</b>	PPP1R13L
<b>Preservatives</b>	Preservative: 0.03% Proclin 300. Constituents: 50% Glycerol
<b>Form/Appearance</b>	Liquid
<b>Storage</b>	Maintain refrigerated at 2-8°C for up to 2 weeks. For long term storage store at -20°C in small aliquots to prevent freeze-thaw cycles.
<b>Note</b>	For research use only
<b>Isotype</b>	IgG
<b>Clonality</b>	Polyclonal
<b>Uniprot ID</b>	<b>Q8WUF5</b>
<b>Dilution Range</b>	IHC-P: 1: 20-1: 200, IF: 1: 50-1: 200
<b>Expiration Date</b>	12 months from date of receipt.



Immunofluorescence analysis of A549 cell...



Immunohistochemical staining of human ce...