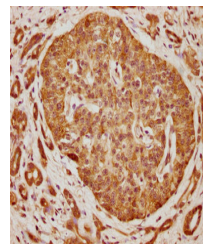


Product Datasheet

SH2D3A antibody (orb687004)

Description	SH2D3A antibody
Species/Host	Rabbit
Reactivity	Human
Conjugation	Unconjugated
Tested Applications	ELISA, IHC
Immunogen	Peptide sequence from Human SH2 domain-containing protein 3A protein (211-231AA)
Target	SH2D3A
Preservatives	Preservative: 0.03% Proclin 300. Constituents: 50% Glycerol
Form/Appearance	Liquid
Storage	Maintain refrigerated at 2-8°C for up to 2 weeks. For long term storage store at -20°C in small aliquots to prevent freeze-thaw cycles.
Note	For research use only
Isotype	IgG
Clonality	Polyclonal
Uniprot ID	Q9BRG2
Dilution Range	IHC-P: 1: 200-1: 500
Expiration Date	12 months from date of receipt.



Immunohistochemical staining of human pa...