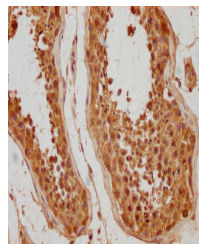


Product Datasheet

WDR92 antibody (orb686932)

Description	WDR92 antibody
Species/Host	Rabbit
Reactivity	Human
Conjugation	Unconjugated
Tested Applications	ELISA, IHC
Immunogen	Recombinant Human WD repeat-containing protein 92 protein (122-357AA)
Target	WDR92
Preservatives	Preservative: 0.03% Proclin 300. Constituents: 50% Glycerol
Form/Appearance	Liquid
Storage	Maintain refrigerated at 2-8°C for up to 2 weeks. For long term storage store at -20°C in small aliquots to prevent freeze-thaw cycles.
Note	For research use only
Isotype	IgG
Clonality	Polyclonal
Uniprot ID	Q96MX6
Dilution Range	IHC-P: 1: 500-1: 1000
Expiration Date	12 months from date of receipt.



Immunohistochemical staining of human te...