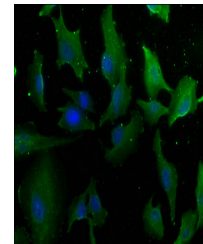


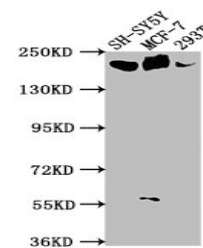
Product Datasheet

LAMA4 antibody (orb686852)

Description	LAMA4 antibody
Species/Host	Rabbit
Reactivity	Human
Conjugation	Unconjugated
Tested Applications	ELISA, IF, WB
Immunogen	Recombinant Human Laminin subunit alpha-4 protein (1593-1823AA)
Target	LAMA4
Preservatives	Preservative: 0.03% Proclin 300. Constituents: 50% Glycerol
Form/Appearance	Liquid
Storage	Maintain refrigerated at 2-8°C for up to 2 weeks. For long term storage store at -20°C in small aliquots to prevent freeze-thaw cycles.
Note	For research use only
Isotype	IgG
Clonality	Polyclonal
Uniprot ID	Q16363
Dilution Range	WB: 1: 500-1: 2000, IF: 1: 50-1: 200
Expiration Date	12 months from date of receipt.



Immunofluorescence analysis of U251 cell...



Western blot analysis of SH-SY5Y whole c...