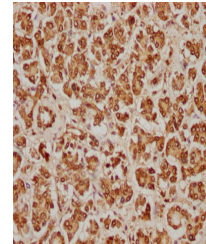


Product Datasheet

HIST2H2BE antibody (orb686844)

Description	HIST2H2BE antibody
Species/Host	Rabbit
Reactivity	Human
Conjugation	Unconjugated
Tested Applications	ELISA, IHC
Immunogen	Recombinant Human Histone H2B type 2-E protein (2-126AA)
Target	HIST2H2BE
Preservatives	Preservative: 0.03% Proclin 300. Constituents: 50% Glycerol
Form/Appearance	Liquid
Storage	Maintain refrigerated at 2-8°C for up to 2 weeks. For long term storage store at -20°C in small aliquots to prevent freeze-thaw cycles.
Note	For research use only
Isotype	IgG
Clonality	Polyclonal
Uniprot ID	Q16778
Dilution Range	IHC-P: 1: 20-1: 200
Expiration Date	12 months from date of receipt.



Immunohistochemical staining of human pa...