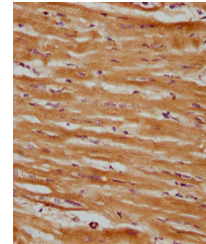


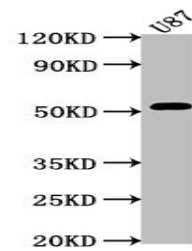
Product Datasheet

SRPX antibody (orb686760)

Description	SRPX antibody
Species/Host	Rabbit
Reactivity	Human
Conjugation	Unconjugated
Tested Applications	ELISA, IHC, WB
Immunogen	Recombinant Human Sushi repeat-containing protein SRPX protein (31-237AA)
Target	SRPX
Preservatives	Preservative: 0.03% Proclin 300. Constituents: 50% Glycerol
Form/Appearance	Liquid
Storage	Upon receipt, store at -20°C or -80°C. Avoid repeated freeze.
Note	For research use only
Isotype	IgG
Clonality	Polyclonal
Uniprot ID	P78539
Dilution Range	WB: 1: 1000-1: 5000, IHC-P: 1: 500-1: 1000
Expiration Date	12 months from date of receipt.



Immunohistochemical staining of human he...



Western blot analysis of U87 whole cell ...