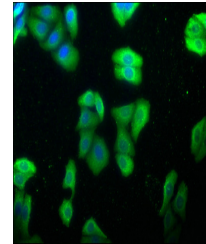


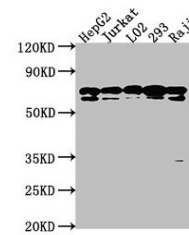
Product Datasheet

HSPA1L antibody (orb686684)

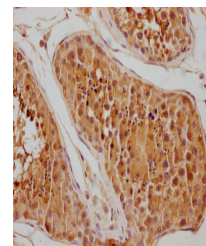
Description	HSPA1L antibody
Species/Host	Rabbit
Reactivity	Human
Conjugation	Unconjugated
Tested Applications	ELISA, IF, IHC, WB
Immunogen	Recombinant Human Heat shock 70 kDa protein 1-like protein (420-641AA)
Target	HSPA1L
Preservatives	Preservative: 0.03% Proclin 300. Constituents: 50% Glycerol
Form/Appearance	Liquid
Storage	Maintain refrigerated at 2-8°C for up to 2 weeks. For long term storage store at -20°C in small aliquots to prevent freeze-thaw cycles.
Note	For research use only
Isotype	IgG
Clonality	Polyclonal
Uniprot ID	P34931
Dilution Range	WB: 1: 1000-1: 5000, IHC-P: 1: 20-1: 200, IF: 1: 50-1: 200
Expiration Date	12 months from date of receipt.



Immunofluorescence analysis of HepG2 cell...



Western blot analysis of HepG2 whole cell...



Immunohistochemical staining of human te...