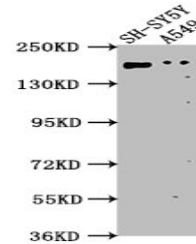


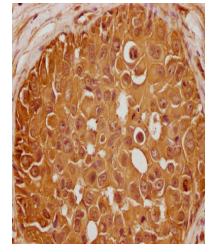
Product Datasheet

GLI2 antibody (orb686680)

Description	GLI2 antibody
Species/Host	Rabbit
Reactivity	Human
Conjugation	Unconjugated
Tested Applications	ELISA, IHC, WB
Immunogen	Peptide sequence from Human Zinc finger protein GLI2 protein (2-20AA)
Target	GLI2
Preservatives	Preservative: 0.03% Proclin 300. Constituents: 50% Glycerol
Form/Appearance	Liquid
Storage	Maintain refrigerated at 2-8°C for up to 2 weeks. For long term storage store at -20°C in small aliquots to prevent freeze-thaw cycles.
Note	For research use only
Isotype	IgG
Clonality	Polyclonal
Uniprot ID	P10070
Dilution Range	WB: 1: 500-1: 2000, IHC-P: 1: 20-1: 200
Expiration Date	12 months from date of receipt.



Western blot analysis of SH-SY5Y whole c...



Immunohistochemical staining of human br...