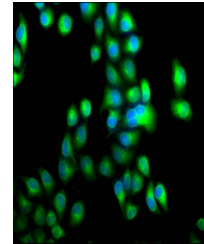


Product Datasheet

PDE1A antibody (orb686500)

Description	PDE1A antibody
Species/Host	Rabbit
Reactivity	Human
Conjugation	Unconjugated
Tested Applications	ELISA, IF
Immunogen	Recombinant Human Calcium/calmodulin-dependent 3',5'-cyclic nucleotide phosphodiesterase 1A protein (1-219AA)
Target	PDE1A
Preservatives	Preservative: 0.03% Proclin 300. Constituents: 50% Glycerol
Form/Appearance	Liquid
Storage	Maintain refrigerated at 2-8°C for up to 2 weeks. For long term storage store at -20°C in small aliquots to prevent freeze-thaw cycles.
Note	For research use only
Isotype	IgG
Clonality	Polyclonal
Uniprot ID	P54750
Dilution Range	IF: 1: 50-1: 200
Expiration Date	12 months from date of receipt.



Immunofluorescence analysis of HeLa cell...