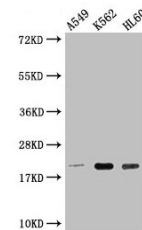


Product Datasheet

POLR2G antibody (orb686476)

Description	POLR2G antibody
Species/Host	Rabbit
Reactivity	Human
Conjugation	Unconjugated
Tested Applications	ELISA, WB
Immunogen	Recombinant Human DNA-directed RNA polymerase II subunit RPB7 protein (1-172AA)
Target	POLR2G
Preservatives	Preservative: 0.03% Proclin 300. Constituents: 50% Glycerol
Form/Appearance	Liquid
Storage	Maintain refrigerated at 2-8°C for up to 2 weeks. For long term storage store at -20°C in small aliquots to prevent freeze-thaw cycles.
Note	For research use only
Isotype	IgG
Clonality	Polyclonal
Uniprot ID	P62487
Dilution Range	WB: 1: 1000-1: 5000
Expiration Date	12 months from date of receipt.



Western blot analysis of A549 whole cell...