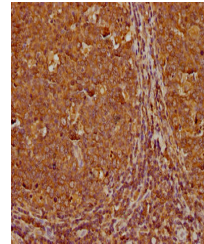


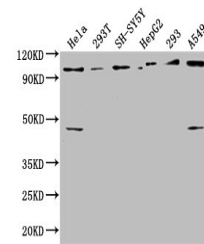
## Product Datasheet

### RABEP1 antibody (orb686224)

<b>Description</b>	RABEP1 antibody
<b>Species/Host</b>	Rabbit
<b>Reactivity</b>	Human
<b>Conjugation</b>	Unconjugated
<b>Tested Applications</b>	ELISA, IHC, WB
<b>Immunogen</b>	Recombinant Human Rab GTPase-binding effector protein 1 protein (1-255AA)
<b>Target</b>	RABEP1
<b>Preservatives</b>	Preservative: 0.03% Proclin 300. Constituents: 50% Glycerol
<b>Form/Appearance</b>	Liquid
<b>Storage</b>	Upon receipt, store at -20°C or -80°C. Avoid repeated freeze.
<b>Note</b>	For research use only
<b>Isotype</b>	IgG
<b>Clonality</b>	Polyclonal
<b>Uniprot ID</b>	<a href="#">Q15276</a>
<b>Dilution Range</b>	WB: 1: 1000-1: 5000, IHC-P: 1: 200-1: 500
<b>Expiration Date</b>	12 months from date of receipt.



Immunohistochemical staining of human to...



Western blot analysis of HeLa whole cell...