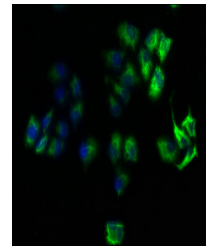


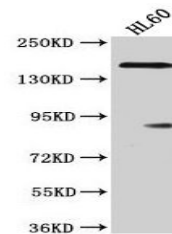
## Product Datasheet

### ROCK1 antibody (orb686220)

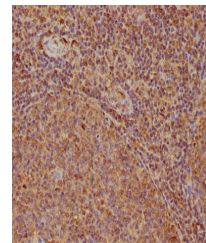
|                            |   |
|----------------------------|---|
| <b>Description</b>         | ROCK1 antibody  |
| <b>Species/Host</b>        | Rabbit  |
| <b>Reactivity</b>          | Human   |
| <b>Conjugation</b>         | Unconjugated  |
| <b>Tested Applications</b> | ELISA, IF, IHC, WB  |
| <b>Immunogen</b>           | Recombinant Human Rho-associated protein kinase 1 protein (405-668AA) |
| <b>Target</b>              | ROCK1   |
| <b>Preservatives</b>       | Preservative: 0.03% Proclin 300. Constituents: 50% Glycerol           |
| <b>Form/Appearance</b>     | Liquid  |
| <b>Storage</b>             | Upon receipt, store at -20°C or -80°C. Avoid repeated freeze.         |
| <b>Note</b>                | For research use only   |
| <b>Isotype</b>             | IgG   |
| <b>Clonality</b>           | Polyclonal  |
| <b>Uniprot ID</b>          | <a href="#">Q13464</a>  |
| <b>Dilution Range</b>      | WB: 1: 1000-1: 5000, IHC-P: 1: 200-1: 500, IF: 1: 50-1: 200           |
| <b>Expiration Date</b>     | 12 months from date of receipt.                                       |



Immunofluorescence analysis of HeLa cell...



Western blot analysis of HL60 whole cell...



Immunohistochemical staining of human to...