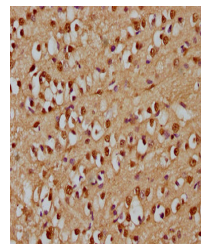


Product Datasheet

RBL2 antibody (orb686212)

Description	RBL2 antibody
Species/Host	Rabbit
Reactivity	Human
Conjugation	Unconjugated
Tested Applications	ELISA, IHC
Immunogen	Recombinant Human Retinoblastoma-like protein 2 protein (417-616AA)
Target	RBL2
Preservatives	Preservative: 0.03% Proclin 300. Constituents: 50% Glycerol
Form/Appearance	Liquid
Storage	Upon receipt, store at -20°C or -80°C. Avoid repeated freeze.
Note	For research use only
Isotype	IgG
Clonality	Polyclonal
Uniprot ID	Q08999
Dilution Range	IHC-P: 1: 200-1: 500
Expiration Date	12 months from date of receipt.



Immunohistochemical staining of human br...