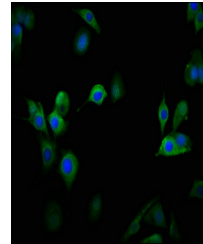


Product Datasheet

CACNA1D antibody (orb686180)

Description	CACNA1D antibody
Species/Host	Rabbit
Reactivity	Human
Conjugation	Unconjugated
Tested Applications	ELISA, IF
Immunogen	Recombinant Human Voltage-dependent L-type calcium channel subunit alpha-1D protein (1691-1806AA)
Target	CACNA1D
Preservatives	Preservative: 0.03% Proclin 300. Constituents: 50% Glycerol
Form/Appearance	Liquid
Storage	Upon receipt, store at -20°C or -80°C. Avoid repeated freeze.
Note	For research use only
Isotype	IgG
Clonality	Polyclonal
Uniprot ID	Q01668
Dilution Range	IF: 1: 50-1: 200
Expiration Date	12 months from date of receipt.



Immunofluorescence analysis of MCF-7 cel...