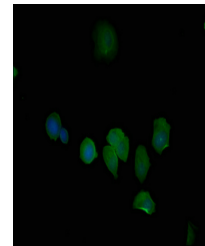


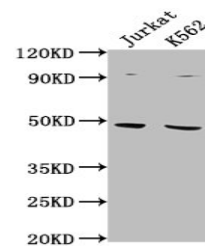
Product Datasheet

PSMD6 antibody (orb685813)

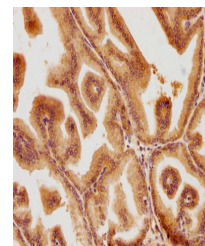
Description	PSMD6 antibody
Species/Host	Rabbit
Reactivity	Human
Conjugation	Unconjugated
Tested Applications	ELISA, IF, IHC, WB
Immunogen	Peptide sequence from Human 26S proteasome non-ATPase regulatory subunit 6 protein (355-372AA)
Target	PSMD6
Preservatives	Preservative: 0.03% Proclin 300. Constituents: 50% Glycerol
Form/Appearance	Liquid
Storage	Maintain refrigerated at 2-8°C for up to 2 weeks. For long term storage store at -20°C in small aliquots to prevent freeze-thaw cycles.
Note	For research use only
Isotype	IgG
Clonality	Polyclonal
Uniprot ID	Q15008
Dilution Range	WB: 1: 1000-1: 5000, IHC-P: 1: 20-1: 200, IF: 1: 50-1: 200
Expiration Date	12 months from date of receipt.



Immunofluorescence analysis of MCF-7 cel...



Western blot analysis of Jurkat whole ce...



Immunohistochemical staining of human pr...