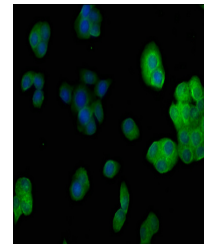


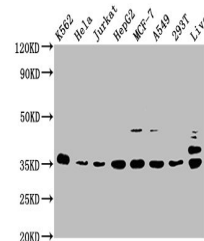
Product Datasheet

PSMD14 antibody (orb685733)

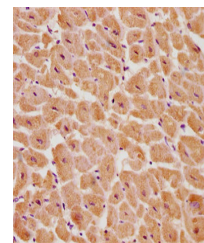
Description	PSMD14 antibody
Species/Host	Rabbit
Reactivity	Human, Rat
Conjugation	Unconjugated
Tested Applications	ELISA, IF, IHC, WB
Immunogen	Peptide sequence from Human 26S proteasome non-ATPase regulatory subunit 14 protein (264-283AA)
Target	PSMD14
Preservatives	Preservative: 0.03% Proclin 300. Constituents: 50% Glycerol
Form/Appearance	Liquid
Storage	Upon receipt, store at -20°C or -80°C. Avoid repeated freeze.
Note	For research use only
Isotype	IgG
Clonality	Polyclonal
Uniprot ID	O00487
Dilution Range	WB: 1: 1000-1: 5000, IHC-P: 1: 20-1: 200, IF: 1: 50-1: 200
Expiration Date	12 months from date of receipt.



Immunofluorescence analysis of PC-3 cell...



Western blot analysis of K562 whole cell...



Immunohistochemical staining of human he...