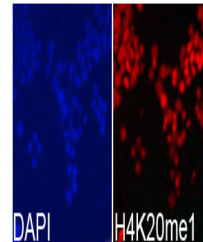


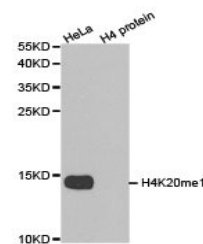
Product Datasheet

Histone H4K20me1 antibody (orb685615)

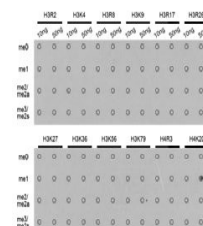
Description	Histone H4K20me1 antibody
Species/Host	Rabbit
Reactivity	Human, Mouse, Rat
Conjugation	Unconjugated
Tested Applications	ChIP, ELISA, IF, IP, WB
Immunogen	A synthetic peptide corresponding to the amino terminus of histone H4 in which Lys20 is mono-methylated.
Target	HIST3H3
Preservatives	Buffer: PBS with 0.02% sodium azide, 50% glycerol, pH7.3.
Form/Appearance	liquid
Storage	Maintain refrigerated at 2-8°C for up to 2 weeks. For long term storage store at -20°C in small aliquots to prevent freeze-thaw cycles.
Note	For research use only
Isotype	IgG
Clonality	Polyclonal
Uniprot ID	Q16695
Dilution Range	WB: 1: 500-1: 2000, IF: 1: 50-1: 200, IP: 1: 50-1: 200, ChIP: 1: 50-1: 200
Expiration Date	12 months from date of receipt.



Immunofluorescence analysis of 293T cell...



Western blot analysis of HeLa cell line ...



Dot-blot analysis of methylation peptide...