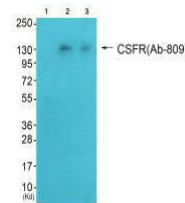


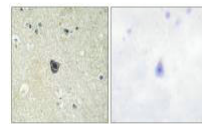
Product Datasheet

CSF1R (Ab-809) antibody (orb685574)

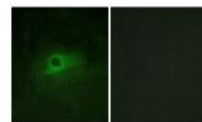
Description	CSF1R (Ab-809) antibody
Species/Host	Rabbit
Reactivity	Human, Mouse
Conjugation	Unconjugated
Tested Applications	ELISA, IF, IHC, WB
Immunogen	Synthesized non-phosphopeptide derived from Human CSFR around the phosphorylation site of tyrosine 809 (S-N-Y(p)-I-V).
Target	CSF1R
Preservatives	Rabbit IgG in phosphate buffered saline (without Mg ²⁺ and Ca ²⁺), pH 7.4, 150mM NaCl, 0.02% sodium azide and 50% glycerol.
Form/Appearance	liquid
Storage	Upon receipt, store at -20°C or -80°C. Avoid repeated freeze.
Note	For research use only
Isotype	IgG
Clonality	Polyclonal
Uniprot ID	P07333
Dilution Range	WB: 1: 500-1: 3000, IHC-P: 1: 50-1: 100, IF: 1: 100-1: 500
Expiration Date	12 months from date of receipt.



Western blot analysis of HeLa cells (Lan...



Immunohistochemical staining of human br...



Immunofluorescence analysis of HeLa cell...