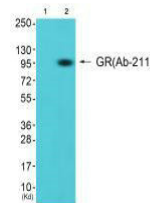


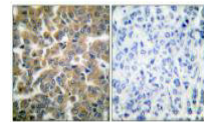
Product Datasheet

NR3C1 (Ab-211) antibody (orb685569)

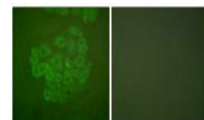
| | |
|----------------------------|--|
| Description | NR3C1 (Ab-211) antibody |
| Species/Host | Rabbit |
| Reactivity | Human, Mouse, Rat |
| Conjugation | Unconjugated |
| Tested Applications | ELISA, IF, IHC, WB |
| Immunogen | Synthesized non-phosphopeptide derived from Human GR around the phosphorylation site of serine 211 (N-E-S-P-W). |
| Target | NR3C1 |
| Preservatives | Rabbit IgG in phosphate buffered saline (without Mg ²⁺ and Ca ²⁺), pH 7.4, 150mM NaCl, 0.02% sodium azide and 50% glycerol. |
| Form/Appearance | liquid |
| Storage | Maintain refrigerated at 2-8°C for up to 2 weeks. For long term storage store at -20°C in small aliquots to prevent freeze-thaw cycles. |
| Note | For research use only |
| Isotype | IgG |
| Clonality | Polyclonal |
| Uniprot ID | P04150 |
| Dilution Range | WB: 1: 500-1: 3000, IHC-P: 1: 50-1: 100, IF: 1: 100-1: 500 |
| Expiration Date | 12 months from date of receipt. |



Western blot analysis of K562 cells (Lan...)



Immunohistochemical staining of human br...



Immunofluorescence analysis of A549 cell...