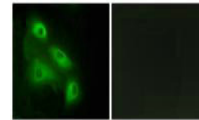


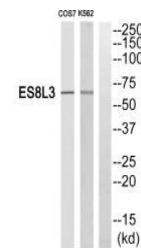
Product Datasheet

EPS8L3 antibody (orb685521)

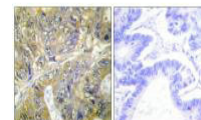
Description	EPS8L3 antibody
Species/Host	Rabbit
Reactivity	Human
Conjugation	Unconjugated
Tested Applications	ELISA, IF, IHC, WB
Immunogen	Synthesized peptide derived from internal of Human ES8L3.
Target	EPS8L3
Preservatives	Rabbit IgG in phosphate buffered saline (without Mg ²⁺ and Ca ²⁺), pH 7.4, 150mM NaCl, 0.02% sodium azide and 50% glycerol.
Form/Appearance	liquid
Storage	Maintain refrigerated at 2-8°C for up to 2 weeks. For long term storage store at -20°C in small aliquots to prevent freeze-thaw cycles.
Note	For research use only
Isotype	IgG
Clonality	Polyclonal
Uniprot ID	Q8TE67
Dilution Range	WB: 1: 500-1: 3000, IHC-P: 1: 50-1: 100, IF: 1: 100-1: 500
Expiration Date	12 months from date of receipt.



Immunofluorescence analysis of HeLa cell...



Western blot analysis of Cos7 cells and ...



Immunohistochemical staining of human CO...