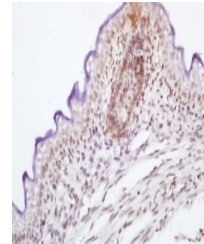


Product Datasheet

c-Raf (phospho-Ser339) antibody (orb6855)

Description	c-Raf (phospho-Ser339) antibody
Species/Host	Rabbit
Reactivity	Human, Mouse
Conjugation	Unconjugated
Tested Applications	ELISA, IF, IHC-Fr, IHC-P, WB
Immunogen	KLH conjugated Synthesised phosphopeptide derived from human RAF1 around the phosphorylation site of Ser339 (DS(p-S)Y)
Target	phospho-RAF1 (Ser339)
Preservatives	0.01M TBS(pH7.4) with 1% rAlbumin, 0.03% Proclin300 and 50% Glycerol.
Form/Appearance	Liquid
Concentration	1mg/ml
Storage	Shipped at 4°C. Store at -20 °C for one year. Avoid repeated freeze/thaw cycles.
Note	For research use only
Isotype	IgG
Clonality	Polyclonal
MW	73 kDa
Uniprot ID	P04049
Expiration Date	12 months from date of receipt.



Immunohistochemical analysis of formalin...