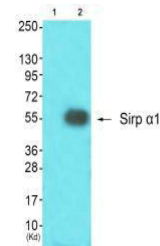


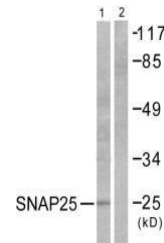
Product Datasheet

SIRPA antibody (orb685461)

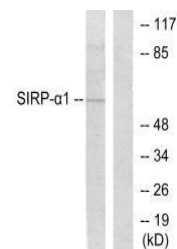
Description	Rabbit polyclonal antibody to SIRPA
Species/Host	Rabbit
Reactivity	Human, Mouse, Rat
Conjugation	Unconjugated
Tested Applications	ELISA, IHC, WB
Immunogen	Synthesized peptide derived from Human SIRP-alpha1.
Target	SIRPA
Preservatives	Rabbit IgG in phosphate buffered saline (without Mg ²⁺ and Ca ²⁺), pH 7.4, 150mM NaCl, 0.02% sodium azide and 50% glycerol.
Form/Appearance	liquid
Storage	Upon receipt, store at -20°C or -80°C. Avoid repeated freeze.
Note	For research use only
Isotype	IgG
Clonality	Polyclonal
Uniprot ID	P78324
Dilution Range	WB: 1: 500-1: 3000, IHC-P: 1: 50-1: 100
Expiration Date	12 months from date of receipt.



Western blot analysis of colo cells (Lan...



Immunohistochemical staining of human br...



Western blot analysis of HepG2 cells usi...