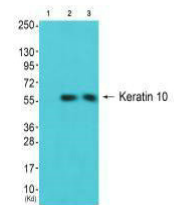


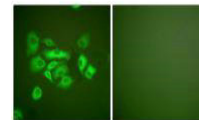
Product Datasheet

KRT10 antibody (orb685441)

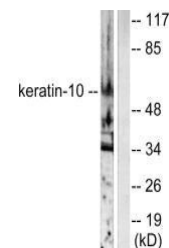
| | |
|----------------------------|--|
| Description | KRT10 antibody |
| Species/Host | Rabbit |
| Reactivity | Human, Rat |
| Conjugation | Unconjugated |
| Tested Applications | ELISA, IF, WB |
| Immunogen | Synthesized peptide derived from Human Keratin 10. |
| Target | KRT10 |
| Preservatives | Rabbit IgG in phosphate buffered saline (without Mg ²⁺ and Ca ²⁺), pH 7.4, 150mM NaCl, 0.02% sodium azide and 50% glycerol. |
| Form/Appearance | liquid |
| Storage | Maintain refrigerated at 2-8°C for up to 2 weeks. For long term storage store at -20°C in small aliquots to prevent freeze-thaw cycles. |
| Note | For research use only |
| Isotype | IgG |
| Clonality | Polyclonal |
| Uniprot ID | P13645 |
| Dilution Range | WB: 1: 500-1: 3000, IF: 1: 100-1: 500 |
| Expiration Date | 12 months from date of receipt. |



Western blot analysis of COS7 cells and ...



Immunofluorescence analysis of A549 cell...



Western blot analysis of HeLa cells usin...