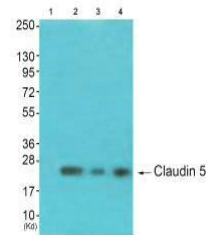


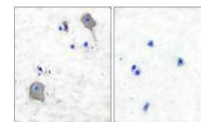
Product Datasheet

Claudin 5 antibody (orb685404)

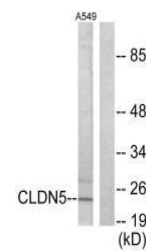
| | |
|----------------------------|--|
| Description | Claudin 5 antibody |
| Species/Host | Rabbit |
| Reactivity | Human, Mouse, Rat |
| Conjugation | Unconjugated |
| Tested Applications | ELISA, IHC, WB |
| Immunogen | Synthesized peptide derived from Human CLDN5. |
| Target | CLDN5 |
| Preservatives | Rabbit IgG in phosphate buffered saline (without Mg ²⁺ and Ca ²⁺), pH 7.4, 150mM NaCl, 0.02% sodium azide and 50% glycerol. |
| Form/Appearance | liquid |
| Storage | Maintain refrigerated at 2-8°C for up to 2 weeks. For long term storage store at -20°C in small aliquots to prevent freeze-thaw cycles. |
| Note | For research use only |
| Isotype | IgG |
| Clonality | Polyclonal |
| Uniprot ID | O00501 |
| Dilution Range | WB: 1: 500-1: 3000, IHC-P: 1: 50-1: 100 |
| Expiration Date | 12 months from date of receipt. |



Western blot analysis of 293 cells (Lane...



Immunohistochemical staining of human br...



Western blot analysis of A549 cells usin...