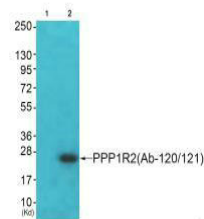


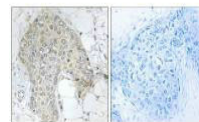
Product Datasheet

PPP1R2 (Ab-120/121) antibody (orb685382)

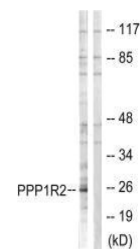
Description	PPP1R2 (Ab-120/121) antibody
Species/Host	Rabbit
Reactivity	Human, Mouse, Rat
Conjugation	Unconjugated
Tested Applications	ELISA, IHC, WB
Immunogen	Synthesized non-phosphopeptide derived from Human PPP1R2 around the phosphorylation site of serine 120 and serine 121 (Q-E-S(p)-S(p)-G-E).
Target	PPP1R2
Preservatives	Rabbit IgG in phosphate buffered saline (without Mg ²⁺ and Ca ²⁺), pH 7.4, 150mM NaCl, 0.02% sodium azide and 50% glycerol.
Form/Appearance	liquid
Storage	Maintain refrigerated at 2-8°C for up to 2 weeks. For long term storage store at -20°C in small aliquots to prevent freeze-thaw cycles.
Note	For research use only
Isotype	IgG
Clonality	Polyclonal
Uniprot ID	P41236
Dilution Range	WB: 1: 500-1: 3000, IHC-P: 1: 50-1: 100
Expiration Date	12 months from date of receipt.



Western blot analysis of JK cells (Lane ...



Immunohistochemical staining of human br...



Western blot analysis of Jurkat cells us...