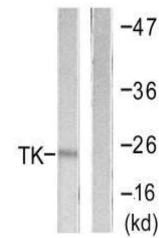


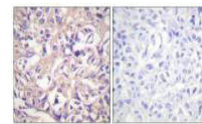
Product Datasheet

TK1 (Ab-13) antibody (orb685376)

Description	TK1 (Ab-13) antibody
Species/Host	Rabbit
Reactivity	Human, Mouse
Conjugation	Unconjugated
Tested Applications	ELISA, IF, IHC, WB
Immunogen	Synthesized non-phosphopeptide derived from Human TK around the phosphorylation site of serine 13 (P-G-S(p)-P-S).
Target	TK1
Preservatives	Rabbit IgG in phosphate buffered saline (without Mg ²⁺ and Ca ²⁺), pH 7.4, 150mM NaCl, 0.02% sodium azide and 50% glycerol.
Form/Appearance	liquid
Storage	Maintain refrigerated at 2-8°C for up to 2 weeks. For long term storage store at -20°C in small aliquots to prevent freeze-thaw cycles.
Note	For research use only
Isotype	IgG
Clonality	Polyclonal
Uniprot ID	P04183
Dilution Range	WB: 1: 500-1: 3000, IHC-P: 1: 50-1: 100, IF: 1: 100-1: 500
Expiration Date	12 months from date of receipt.



Western blot analysis of COLO205 cells u...



Immunohistochemical staining of human br...



Immunofluorescence analysis of HepG2 cel...