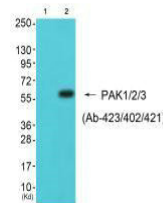


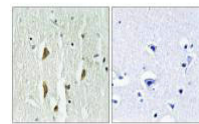
Product Datasheet

PAK1 (Ab-423/402/421) antibody (orb685374)

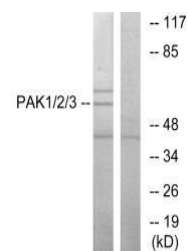
Description	PAK1 (Ab-423/402/421) antibody
Species/Host	Rabbit
Reactivity	Human, Mouse, Rat
Conjugation	Unconjugated
Tested Applications	ELISA, IHC, WB
Immunogen	Synthesized non-phosphopeptide derived from Human PAK1/2/3 around the phosphorylation site of threonine 423/402/421 (R-S-T(p)-M-V).
Target	PAK1/PAK2/PAK3
Preservatives	Rabbit IgG in phosphate buffered saline (without Mg ²⁺ and Ca ²⁺), pH 7.4, 150mM NaCl, 0.02% sodium azide and 50% glycerol.
Form/Appearance	liquid
Storage	Maintain refrigerated at 2-8°C for up to 2 weeks. For long term storage store at -20°C in small aliquots to prevent freeze-thaw cycles.
Note	For research use only
Isotype	IgG
Clonality	Polyclonal
Uniprot ID	Q13153
Dilution Range	WB: 1: 500-1: 3000, IHC-P: 1: 50-1: 100
Expiration Date	12 months from date of receipt.



Western blot analysis of 293 cells (Lane...



Immunohistochemical staining of human br...



Western blot analysis of NIH-3T3 cells u...