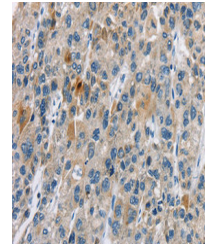


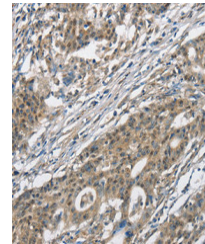
Product Datasheet

CACNA2D1 antibody (orb685288)

Description	CACNA2D1 antibody
Species/Host	Rabbit
Reactivity	Human, Mouse, Rat
Conjugation	Unconjugated
Tested Applications	ELISA, IHC
Immunogen	Synthetic peptide corresponding to a region derived from internal residues of Human calcium channel, voltage-dependent, L type, alpha 1D subunit
Target	CACNA2D1
Preservatives	Rabbit IgG in pH7.3 PBS, 0.05% NaN ₃ , 50% Glycerol.
Form/Appearance	liquid
Storage	Upon receipt, store at -20°C or -80°C. Avoid repeated freeze.
Note	For research use only
Isotype	IgG
Clonality	Polyclonal
Uniprot ID	P54289
Dilution Range	IHC-P: 1: 50-1: 100
Expiration Date	12 months from date of receipt.



Immunohistochemical staining of Human li...



Immunohistochemical staining of Human ga...