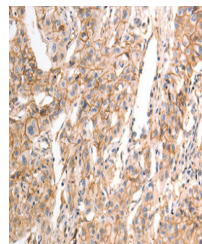


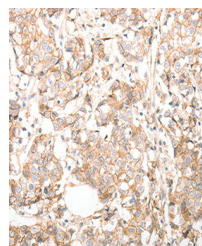
Product Datasheet

CDH23 antibody (orb685287)

Description	CDH23 antibody
Species/Host	Rabbit
Reactivity	Human, Mouse, Rat
Conjugation	Unconjugated
Tested Applications	ELISA, IHC
Immunogen	Synthetic peptide corresponding to residues near the C terminal of Human pan-cadherin
Target	CDH23
Preservatives	Rabbit IgG in pH7.3 PBS, 0.05% NaN ₃ , 50% Glycerol.
Form/Appearance	liquid
Storage	Maintain refrigerated at 2-8°C for up to 2 weeks. For long term storage store at -20°C in small aliquots to prevent freeze-thaw cycles.
Note	For research use only
Isotype	IgG
Clonality	Polyclonal
Uniprot ID	Q9H251
Dilution Range	IHC-P: 1: 50-1: 100
Expiration Date	12 months from date of receipt.



Immunohistochemical staining of Human li...



Immunohistochemical staining of Human br...