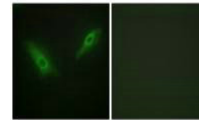


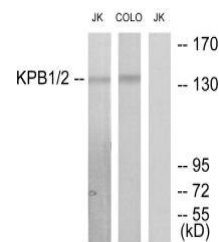
Product Datasheet

PHKA1 antibody (orb684987)

| | |
|----------------------------|--|
| Description | PHKA1 antibody |
| Species/Host | Rabbit |
| Reactivity | Human, Mouse, Rat |
| Conjugation | Unconjugated |
| Tested Applications | ELISA, IF, WB |
| Immunogen | Synthesized peptide derived from internal of Human KPBI/2. |
| Target | PHKA1 |
| Preservatives | Rabbit IgG in phosphate buffered saline (without Mg ²⁺ and Ca ²⁺), pH 7.4, 150mM NaCl, 0.02% sodium azide and 50% glycerol. |
| Form/Appearance | liquid |
| Storage | Maintain refrigerated at 2-8°C for up to 2 weeks. For long term storage store at -20°C in small aliquots to prevent freeze-thaw cycles. |
| Note | For research use only |
| Isotype | IgG |
| Clonality | Polyclonal |
| Uniprot ID | P46020 |
| Dilution Range | WB: 1: 500-1: 3000, IF: 1: 100-1: 500 |
| Expiration Date | 12 months from date of receipt. |



Immunofluorescence analysis of HeLa cell...



Western blot analysis of Jurkat cells an...