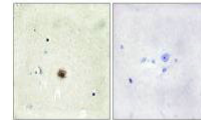


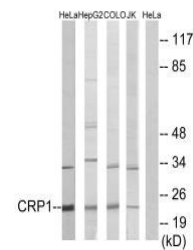
## Product Datasheet

### CSRP1 antibody (orb684969)

|                            |  |
|----------------------------|--|
| <b>Description</b>         | CSRP1 antibody   |
| <b>Species/Host</b>        | Rabbit   |
| <b>Reactivity</b>          | Human, Mouse, Rat  |
| <b>Conjugation</b>         | Unconjugated   |
| <b>Tested Applications</b> | ELISA, IHC, WB   |
| <b>Immunogen</b>           | Synthesized peptide derived from internal of Human CRP1.   |
| <b>Target</b>              | CSRP1  |
| <b>Preservatives</b>       | Rabbit IgG in phosphate buffered saline (without Mg <sup>2+</sup> and Ca <sup>2+</sup> ), pH 7.4, 150mM NaCl, 0.02% sodium azide and 50% glycerol. |
| <b>Form/Appearance</b>     | liquid   |
| <b>Storage</b>             | Maintain refrigerated at 2-8°C for up to 2 weeks. For long term storage store at -20°C in small aliquots to prevent freeze-thaw cycles.            |
| <b>Note</b>                | For research use only  |
| <b>Isotype</b>             | IgG  |
| <b>Clonality</b>           | Polyclonal   |
| <b>Uniprot ID</b>          | <a href="#">P21291</a>   |
| <b>Dilution Range</b>      | WB: 1: 500-1: 3000, IHC-P: 1: 50-1: 100  |
| <b>Expiration Date</b>     | 12 months from date of receipt.  |



Immunohistochemical staining of Human br...



Western blot analysis of HeLa, HepG2 cel...