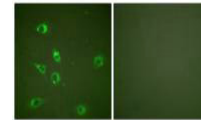


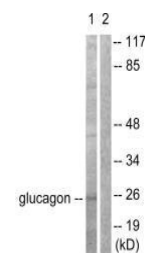
Product Datasheet

GLP2 antibody (orb684870)

Description	GLP2 antibody
Species/Host	Rabbit
Reactivity	Human, Mouse, Rat
Conjugation	Unconjugated
Tested Applications	ELISA, IF, WB
Immunogen	Synthesized peptide derived from Human glucagon.
Target	GCG
Preservatives	Rabbit IgG in phosphate buffered saline (without Mg ²⁺ and Ca ²⁺), pH 7.4, 150mM NaCl, 0.02% sodium azide and 50% glycerol.
Form/Appearance	liquid
Storage	Maintain refrigerated at 2-8°C for up to 2 weeks. For long term storage store at -20°C in small aliquots to prevent freeze-thaw cycles.
Note	For research use only
Isotype	IgG
Clonality	Polyclonal
Uniprot ID	P01275
Dilution Range	WB: 1: 500-1: 3000, IF: 1: 100-1: 500
Expiration Date	12 months from date of receipt.



Immunofluorescence analysis of NIH/3T3 C...



Western blot analysis of COS7 cells usin...