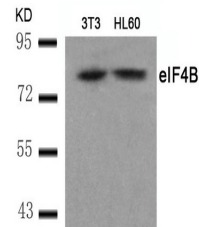


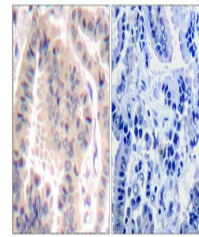
Product Datasheet

EIF4B (Ab-422) antibody (orb684756)

Description	EIF4B (Ab-422) antibody
Species/Host	Rabbit
Reactivity	Human, Mouse
Conjugation	Unconjugated
Tested Applications	ELISA, IHC, WB
Immunogen	Peptide sequence around aa.420~424 (T-G-S-E-S) derived from Human eIF4B.
Target	EIF4B
Preservatives	Supplied at 1.0mg/mL in phosphate buffered saline (without Mg ²⁺ and Ca ²⁺), pH 7.4, 150mM NaCl, 0.02% sodium azide and 50% glycerol.
Form/Appearance	liquid
Storage	Maintain refrigerated at 2-8°C for up to 2 weeks. For long term storage store at -20°C in small aliquots to prevent freeze-thaw cycles.
Note	For research use only
Isotype	IgG
Clonality	Polyclonal
Uniprot ID	P23588
Dilution Range	WB: 1: 500-1: 1000, IHC-P: 1: 50-1: 200
Expiration Date	12 months from date of receipt.



Western blot analysis of 3T3 and HL60 ce...



Immunohistochemical staining of Human Lu...