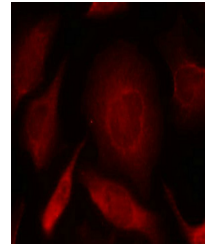


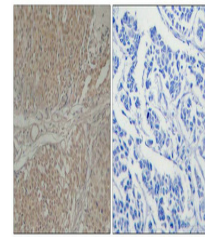
Product Datasheet

SMAD3 (Ab-208) antibody (orb684746)

Description	SMAD3 (Ab-208) antibody
Species/Host	Rabbit
Reactivity	Human, Mouse, Rat
Conjugation	Unconjugated
Tested Applications	ELISA, IF, IHC
Immunogen	Peptide sequence around aa.206~210 (N-L-S-P-N) derived from Human Smad3.
Target	SMAD3
Preservatives	Supplied at 1.0mg/mL in phosphate buffered saline (without Mg ²⁺ and Ca ²⁺), pH 7.4, 150mM NaCl, 0.02% sodium azide and 50% glycerol.
Form/Appearance	liquid
Storage	Maintain refrigerated at 2-8°C for up to 2 weeks. For long term storage store at -20°C in small aliquots to prevent freeze-thaw cycles.
Note	For research use only
Isotype	IgG
Clonality	Polyclonal
Uniprot ID	P84022
Dilution Range	IHC-P: 1: 50-1: 100, IF: 1: 100-1: 200
Expiration Date	12 months from date of receipt.



Immunofluorescence analysis of HeLa cell...



Immunohistochemical staining of human br...