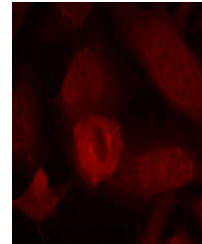


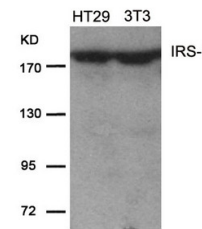
Product Datasheet

IRS1 (Ab-639) antibody (orb684716)

Description	IRS1 (Ab-639) antibody
Species/Host	Rabbit
Reactivity	Human, Mouse, Rat
Conjugation	Unconjugated
Tested Applications	ELISA, IF, WB
Immunogen	Peptide sequence around aa.637~641 (P-K-S-V-S) derived from Human IRS-1.
Target	IRS1
Preservatives	Supplied at 1.0mg/mL in phosphate buffered saline (without Mg ²⁺ and Ca ²⁺), pH 7.4, 150mM NaCl, 0.02% sodium azide and 50% glycerol.
Form/Appearance	liquid
Storage	Maintain refrigerated at 2-8°C for up to 2 weeks. For long term storage store at -20°C in small aliquots to prevent freeze-thaw cycles.
Note	For research use only
Isotype	IgG
Clonality	Polyclonal
Uniprot ID	P35568
Dilution Range	WB: 1: 500-1: 1000, IF: 1: 100-1: 200
Expiration Date	12 months from date of receipt.



Immunofluorescence analysis of HeLa cell...



Western blot analysis of HT29 and 3T3 ce...