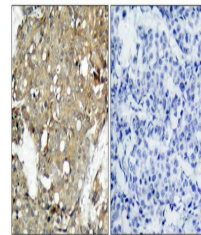


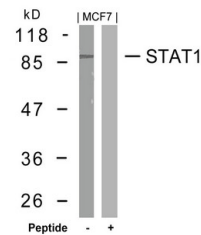
Product Datasheet

STAT1 (Ab-727) antibody (orb684700)

Description	STAT1 (Ab-727) antibody
Species/Host	Rabbit
Reactivity	Human, Mouse, Rat
Conjugation	Unconjugated
Tested Applications	ELISA, IHC, WB
Immunogen	Peptide sequence around aa.725~729 (P-M-S-P-E) derived from Human STAT1.
Target	STAT1
Preservatives	Supplied at 1.0mg/mL in phosphate buffered saline (without Mg ²⁺ and Ca ²⁺), pH 7.4, 150mM NaCl, 0.02% sodium azide and 50% glycerol.
Form/Appearance	liquid
Storage	Maintain refrigerated at 2-8°C for up to 2 weeks. For long term storage store at -20°C in small aliquots to prevent freeze-thaw cycles.
Note	For research use only
Isotype	IgG
Clonality	Polyclonal
Uniprot ID	P42224
Dilution Range	WB: 1: 500-1: 1000, IHC-P: 1: 50-1: 200
Expiration Date	12 months from date of receipt.



Immunohistochemical staining of Human Br...



Western blot analysis of MCF7 cells usin...