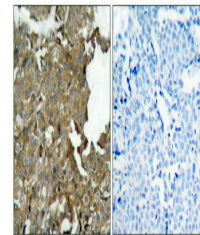


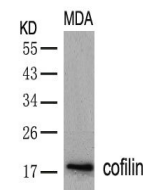
Product Datasheet

CFL1 (Ab-3) antibody (orb684694)

| | |
|----------------------------|--|
| Description | CFL1 (Ab-3) antibody |
| Species/Host | Rabbit |
| Reactivity | Human, Mouse, Rat |
| Conjugation | Unconjugated |
| Tested Applications | ELISA, IHC, WB |
| Immunogen | Peptide sequence around aa. 1~5 (M-A-S-G-V) derived from Human cofilin. |
| Target | CFL1 |
| Preservatives | Supplied at 1.0mg/mL in phosphate buffered saline (without Mg ²⁺ and Ca ²⁺), pH 7.4, 150mM NaCl, 0.02% sodium azide and 50% glycerol. |
| Form/Appearance | liquid |
| Storage | Maintain refrigerated at 2-8°C for up to 2 weeks. For long term storage store at -20°C in small aliquots to prevent freeze-thaw cycles. |
| Note | For research use only |
| Isotype | IgG |
| Clonality | Polyclonal |
| Uniprot ID | P23528 |
| Dilution Range | WB: 1: 500-1: 1000, IHC-P: 1: 50-1: 200 |
| Expiration Date | 12 months from date of receipt. |



Immunohistochemical staining of Human Br...



Western blot analysis of MDA cells using...