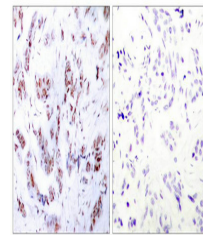


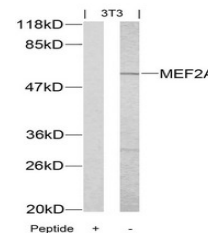
Product Datasheet

MEF2A (Ab-312) antibody (orb684640)

Description	MEF2A (Ab-312) antibody
Species/Host	Rabbit
Reactivity	Human, Mouse, Rat
Conjugation	Unconjugated
Tested Applications	ELISA, IHC, WB
Immunogen	Peptide sequence around aa.310~314 (L-A-T-P-V) derived from Human MEF2A.
Target	MEF2A
Preservatives	Supplied at 1.0mg/mL in phosphate buffered saline (without Mg ²⁺ and Ca ²⁺), pH 7.4, 150mM NaCl, 0.02% sodium azide and 50% glycerol.
Form/Appearance	liquid
Storage	Maintain refrigerated at 2-8°C for up to 2 weeks. For long term storage store at -20°C in small aliquots to prevent freeze-thaw cycles.
Note	For research use only
Isotype	IgG
Clonality	Polyclonal
Uniprot ID	Q02078
Dilution Range	WB: 1: 500-1: 1000, IHC-P: 1: 50-1: 200
Expiration Date	12 months from date of receipt.



Immunohistochemical staining of Human Br...



Western blot analysis of 3T3 cells using...