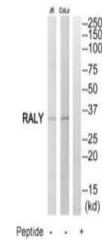


Product Datasheet

RALY antibody (orb684473)

| | |
|----------------------------|--|
| Description | RALY antibody |
| Species/Host | Rabbit |
| Reactivity | Human |
| Conjugation | Unconjugated |
| Tested Applications | ELISA, WB |
| Immunogen | Synthesized peptide derived from internal of Human RALY. |
| Target | RALY |
| Preservatives | Rabbit IgG in phosphate buffered saline (without Mg ²⁺ and Ca ²⁺), pH 7.4, 150mM NaCl, 0.02% sodium azide and 50% glycerol. |
| Form/Appearance | liquid |
| Storage | Upon receipt, store at -20°C or -80°C. Avoid repeated freeze. |
| Note | For research use only |
| Isotype | IgG |
| Clonality | Polyclonal |
| Uniprot ID | Q9UKM9 |
| Dilution Range | WB: 1: 500-1: 3000 |
| Expiration Date | 12 months from date of receipt. |



Western blot analysis of Jurkat cells an...