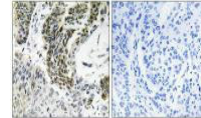


Product Datasheet

RREB1 antibody (orb684321)

Description	RREB1 antibody
Species/Host	Rabbit
Reactivity	Human, Mouse
Conjugation	Unconjugated
Tested Applications	ELISA, IHC
Immunogen	Synthesized peptide derived from internal of Human RREB1.
Target	RREB1
Preservatives	Rabbit IgG in phosphate buffered saline (without Mg ²⁺ and Ca ²⁺), pH 7.4, 150mM NaCl, 0.02% sodium azide and 50% glycerol.
Form/Appearance	liquid
Storage	Maintain refrigerated at 2-8°C for up to 2 weeks. For long term storage store at -20°C in small aliquots to prevent freeze-thaw cycles.
Note	For research use only
Isotype	IgG
Clonality	Polyclonal
Uniprot ID	Q92766
Dilution Range	IHC-P: 1: 50-1: 100
Expiration Date	12 months from date of receipt.



Immunohistochemical staining of human lu...