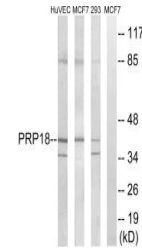


Product Datasheet

PRPF18 antibody (orb684283)

Description	PRPF18 antibody
Species/Host	Rabbit
Reactivity	Human, Mouse
Conjugation	Unconjugated
Tested Applications	ELISA, WB
Immunogen	Synthesized peptide derived from internal of Human PRPF18.
Target	PRPF18
Preservatives	Rabbit IgG in phosphate buffered saline (without Mg ²⁺ and Ca ²⁺), pH 7.4, 150mM NaCl, 0.02% sodium azide and 50% glycerol.
Form/Appearance	liquid
Storage	Maintain refrigerated at 2-8°C for up to 2 weeks. For long term storage store at -20°C in small aliquots to prevent freeze-thaw cycles.
Note	For research use only
Isotype	IgG
Clonality	Polyclonal
Uniprot ID	Q99633
Dilution Range	WB: 1: 500-1: 3000
Expiration Date	12 months from date of receipt.



Western blot analysis of HuvEc cells, MCF...