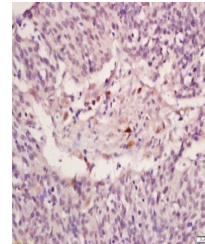


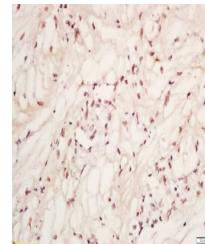
Product Datasheet

Raptor (phospho-Ser792) antibody (orb6837)

Description	Raptor (phospho-Ser792) antibody
Species/Host	Rabbit
Reactivity	Human, Mouse
Conjugation	Unconjugated
Tested Applications	IHC-P
Immunogen	KLH conjugated Synthesised phosphopeptide derived from human Raptor around the phosphorylation site of Ser792 (VS(p-S)YS)
Target	Phospho-Raptor (Ser792)
Preservatives	0.01M TBS(pH7.4) with 1% rAlbumin, 0.03% Proclin300 and 50% Glycerol.
Form/Appearance	Liquid
Concentration	1mg/ml
Storage	Shipped at 4°C. Store at -20 °C for one year. Avoid repeated freeze/thaw cycles.
Note	For research use only
Isotype	IgG
Clonality	Polyclonal
MW	140 kDa
Uniprot ID	Q8N122
Dilution Range	IHC-P=1:100-500
Expiration Date	12 months from date of receipt.



Immunohistochemical staining of human la...



Immunohistochemical staining of human ce...