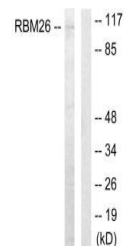


Product Datasheet

RBM26 antibody (orb683638)

Description	RBM26 antibody
Species/Host	Rabbit
Reactivity	Human, Mouse
Conjugation	Unconjugated
Tested Applications	ELISA, WB
Immunogen	Synthesized peptide derived from C-terminal of Human RBM26.
Target	RBM26
Preservatives	Rabbit IgG in phosphate buffered saline (without Mg ²⁺ and Ca ²⁺), pH 7.4, 150mM NaCl, 0.02% sodium azide and 50% glycerol.
Form/Appearance	liquid
Storage	Maintain refrigerated at 2-8°C for up to 2 weeks. For long term storage store at -20°C in small aliquots to prevent freeze-thaw cycles.
Note	For research use only
Isotype	IgG
Clonality	Polyclonal
Uniprot ID	Q5T8P6
Dilution Range	WB: 1: 500-1: 3000
Expiration Date	12 months from date of receipt.



Western blot analysis of Jurkat cells using RBM26 antibody. us...