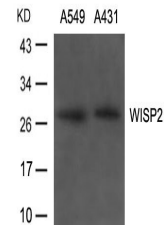


Product Datasheet

WISP2 antibody (orb683293)

Description	WISP2 antibody
Species/Host	Rabbit
Reactivity	Human
Conjugation	Unconjugated
Tested Applications	ELISA, WB
Immunogen	Peptide sequence around aa.242~246(G-R-S-P-Q) derived from Human WISP2.
Target	WISP2
Preservatives	Supplied at 1.0mg/mL in phosphate buffered saline (without Mg ²⁺ and Ca ²⁺), pH 7.4, 150mM NaCl, 0.02% sodium azide and 50% glycerol.
Form/Appearance	liquid
Storage	Maintain refrigerated at 2-8°C for up to 2 weeks. For long term storage store at -20°C in small aliquots to prevent freeze-thaw cycles.
Note	For research use only
Isotype	IgG
Clonality	Polyclonal
Uniprot ID	O76076
Dilution Range	WB: 1: 500-1: 1000
Expiration Date	12 months from date of receipt.



Western blot analysis of A549, A431 cell...