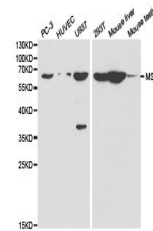


Product Datasheet

MSR1 antibody (orb682975)

Description	MSR1 antibody
Species/Host	Rabbit
Reactivity	Human, Mouse, Rat
Conjugation	Unconjugated
Tested Applications	ELISA, IHC, WB
Immunogen	Recombinant protein of Human MSR1
Target	MSR1
Preservatives	Store at -20°C or -80°C. Avoid freeze / thaw cycles. Buffer: PBS with 0.02% sodium azide, 50% glycerol, pH7.3.
Form/Appearance	liquid
Storage	Upon receipt, store at -20°C or -80°C. Avoid repeated freeze.
Note	For research use only
Isotype	IgG
Clonality	Polyclonal
Uniprot ID	P21757
Dilution Range	WB: 1: 500-1: 2000, IHC-P: 1: 50-1: 200
Expiration Date	12 months from date of receipt.



Western blot analysis of various cell lines.